

# $N^1, N^1$ -Dimethylpropane-1,2-diaminium bis(6-carboxypyridine-2-carboxylate) monohydrate

Hossein Aghabozorg,<sup>a\*</sup> Mahsa Foroughian,<sup>a</sup> Alireza Foroumadi,<sup>b</sup> Giuseppe Bruno<sup>c</sup> and Hadi Amiri Rudbari<sup>c</sup>

<sup>a</sup>Faculty of Chemistry, Islamic Azad University, North Tehran Branch, Tehran, Iran,

<sup>b</sup>Drug Design and Development Research Center, Tehran University of Medical

Sciences, Tehran, Iran, and <sup>c</sup>Dipartimento di Chimica Inorganica, Vill. S. Agata,

Salita Sperone 31, Università di Messina, 98166 Messina, Italy

Correspondence e-mail: haghazorg@yahoo.com

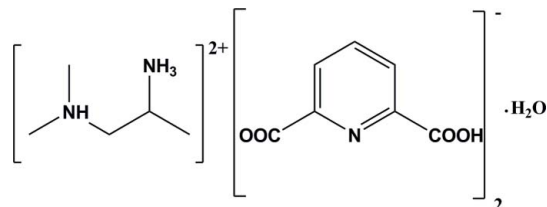
Received 17 February 2011; accepted 10 March 2011

Key indicators: single-crystal X-ray study;  $T = 293$  K; mean  $\sigma(C-C) = 0.002$  Å;  $R$  factor = 0.029;  $wR$  factor = 0.084; data-to-parameter ratio = 15.6.

The asymmetric unit of the title proton-transfer compound,  $C_5H_{16}N_2^{2+} \cdot 2C_7H_4NO_4^- \cdot H_2O$ , consists of two mono-deprotonated pyridine-2,6-dicarboxylic acid molecules as anions, *viz.*  $(py-2,6-dcH)^-$ , one diprotonated  $N^1, N^1$ -dimethylpropane-1,2-diamine molecule as a cation, *viz.*  $(dmpdaH_2)^{2+}$ , and one water molecule. The crystal packing shows extensive  $O-H \cdots O$ ,  $N-H \cdots O$ ,  $N-H \cdots N$  and  $O-H \cdots N$  and weak intermolecular  $C-H \cdots O$  hydrogen bonds. These interactions link the  $(dmpdaH_2)^{2+}$  cation, the  $(py-2,6-dcH)^-$  anions and water molecule and play an important role in the stabilization of crystal packing.

## Related literature

For background to proton-transfer compounds, see: Aghabozorg *et al.* (2008). For related structures, see: Aghabozorg, Bayan *et al.* (2011); Aghabozorg, Mofidi Rouchi *et al.* (2011); Aghabozorg, Saemi *et al.* (2011); Sharif *et al.* (2010).



## Experimental

### Crystal data

$C_5H_{16}N_2^{2+} \cdot 2C_7H_4NO_4^- \cdot H_2O$

$M_r = 454.44$

Orthorhombic,  $P2_12_12_1$

$a = 11.826$  (8) Å

$b = 13.376$  (8) Å

$c = 13.479$  (8) Å

$V = 2132$  (2) Å<sup>3</sup>

$Z = 4$

Mo  $K\alpha$  radiation  
 $\mu = 0.11$  mm<sup>-1</sup>

$T = 293$  K  
 $0.42 \times 0.38 \times 0.22$  mm

### Data collection

Bruker APEXII CCD diffractometer  
Absorption correction: multi-scan (*SADABS*; Bruker, 2008)  
 $T_{\min} = 0.708$ ,  $T_{\max} = 0.746$

70173 measured reflections  
4650 independent reflections  
4509 reflections with  $I > 2\sigma(I)$   
 $R_{\text{int}} = 0.025$

### Refinement

$R[F^2 > 2\sigma(F^2)] = 0.029$   
 $wR(F^2) = 0.084$   
 $S = 1.07$   
4650 reflections  
298 parameters  
3 restraints

H atoms treated by a mixture of independent and constrained refinement  
 $\Delta\rho_{\text{max}} = 0.23$  e Å<sup>-3</sup>  
 $\Delta\rho_{\text{min}} = -0.18$  e Å<sup>-3</sup>

Table 1

Hydrogen-bond geometry (Å, °).

$D-H \cdots A$	$D-H$	$H \cdots A$	$D \cdots A$	$D-H \cdots A$
$N1-H1 \cdots O9$	0.91	1.82	2.711 (2)	165
$N2-H1A \cdots O9$	0.89	2.55	3.392 (3)	158
$N2-H1A \cdots N3$	0.89	2.40	2.988 (2)	124
$N2-H2A \cdots O5^i$	0.89	2.25	2.948 (2)	135
$N2-H2A \cdots N4^i$	0.89	2.32	3.123 (3)	151
$O3-H3 \cdots O5$	0.82	1.68	2.473 (2)	162
$N2-H3A \cdots O2^{ii}$	0.89	2.05	2.845 (2)	148
$N2-H3A \cdots O7^i$	0.89	2.30	2.902 (2)	125
$O7-H7 \cdots O1^{iii}$	0.82	1.75	2.535 (2)	159
$O9-H9A \cdots O1$	0.80 (2)	2.30 (2)	2.900 (2)	132 (2)
$O9-H9A \cdots N3$	0.80 (2)	2.38 (2)	3.107 (3)	152 (2)
$O9-H9B \cdots O3$	0.83 (2)	2.33 (3)	2.958 (3)	133 (3)
$O9-H9B \cdots O6$	0.83 (2)	2.16 (2)	2.844 (2)	139 (3)
$C3-H3B \cdots O6^{iv}$	0.97	2.58	3.541 (3)	172
$C3-H3C \cdots O2^{ii}$	0.97	2.20	3.057 (3)	147
$C4-H4 \cdots O4^i$	0.98	2.45	3.349 (3)	152
$C15-H15 \cdots O8^v$	0.93	2.48	3.166 (3)	131
$C2-H20A \cdots O4^i$	0.96	2.57	3.443 (3)	152

Symmetry codes: (i)  $-x + 1, y - \frac{1}{2}, -z + \frac{3}{2}$ ; (ii)  $-x + 1, y + \frac{1}{2}, -z + \frac{3}{2}$ ; (iii)  $x, y + 1, z$ ; (iv)  $-x + \frac{3}{2}, -y + 1, z - \frac{1}{2}$ ; (v)  $-x + 2, y - \frac{1}{2}, -z + \frac{3}{2}$ .

Data collection: *APEX2* (Bruker, 2008); cell refinement: *SAINT* (Bruker, 2008); data reduction: *SAINT*; program(s) used to solve structure: *SHELXS97* (Sheldrick, 2008); program(s) used to refine structure: *SHELXL97* (Sheldrick, 2008); molecular graphics: *SHELXTL* (Sheldrick, 2008); software used to prepare material for publication: *SHELXTL*.

The authors are grateful to the Islamic Azad University, North Tehran Branch, for financial support.

Supplementary data and figures for this paper are available from the IUCr electronic archives (Reference: VM2081).

## References

- Aghabozorg, H., Bayan, M., Mirzaei, M. & Notash, B. (2011). *Acta Cryst.* **E67**, o610.  
Aghabozorg, H., Manteghi, F. & Sheshmani, S. (2008). *J. Iran. Chem. Soc.*, **5**, 184–227.  
Aghabozorg, H., Mofidi Rouchi, A., Mirzaei, M. & Notash, B. (2011). *Acta Cryst.* **E67**, o54.

Aghabozorg, H., Saemi, M., Khazaei, Z., Amani, V. & Notash, B. (2011). *Acta Cryst.* **E67**, o292.  
Bruker (2008). *APEX2, SAINT and SADABS*. Bruker AXS Inc., Madison, Wisconsin, USA.

Sharif, M. A., Tabatabaee, M., Adinehloo, M. & Aghabozorg, H. (2010). *Acta Cryst.* **E66**, o3232.  
Sheldrick, G. M. (2008). *Acta Cryst.* **A64**, 112–122.

**supplementary materials**

*Acta Cryst.* (2011). E67, o932-o933 [ doi:10.1107/S1600536811009287 ]

## ***N,N*-Dimethylpropane-1,2-diaminium bis(6-carboxypyridine-2-carboxylate) monohydrate**

**H. Aghabozorg, M. Foroughian, A. Foroumadi, G. Bruno and H. Amiri Rudbari**

### **Comment**

Proton transfer is very important in chemistry, biochemistry and medicinal chemistry. In order to synthesize new types of proton transfer compounds our research group focusses on forming new compounds from pyridine dicarboxylic acids (Aghabozorg *et al.* 2008) and different organic bases with nitrogen donor sites such as propane-1,3-diamine (Aghabozorg, Bayan *et al.*, 2011), diethylenetriamine (Aghabozorg, Saemi *et al.*, 2011) and 2-amino-4-methylpyridine (Aghabozorg, Mofidi Rouchi *et al.*, 2011; Sharif *et al.*, 2010).

The asymmetric unit of the title compound consists of two mono deprotonated pyridine-2,6-dicarboxylic acid as anion, one diprotonated *N,N*-dimethyl-1,2-propanediamine as cation, and one water molecule (Fig. 1). In the crystal packing there are extensive O—H $\cdots$ O, N—H $\cdots$ O, N—H $\cdots$ N, O—H $\cdots$ N and weak intermolecular C—H $\cdots$ O hydrogen bonds (Table 1, Fig. 2, Fig. 3). The *N,N*-dimethyl-1,2-propanediaminium (dmpdaH<sub>2</sub>)<sup>2+</sup> cation is linked to the water molecule by N—H $\cdots$ O hydrogen bonds. This water molecule also connects the cationic part to the anionic part by N—H $\cdots$ O, O—H $\cdots$ N and O—H $\cdots$ O hydrogen bonds. These hydrogen bonds play an important role in the stabilization of the crystal packing.

### **Experimental**

The solution of pyridine-2,6-dicarboxylic acid (0.334 g, 2 mmol) in 15 ml water was reacted with a solution of *N,N*-dimethyl-1,2-propanediamine (0.258 ml, 2 mmol) in 7 ml water in 1:1 molar ratios. The reaction mixture was stirred for 2hrs at 298 K. The colorless crystals of the title compound appeared after slow evaporation of solvent at room temperature in darkness (m.p:177°C).

### **Refinement**

The hydrogen atoms of the water molecule were found in difference Fourier map and refined isotropically with distance restraints of O—H 0.80 (2) and 0.83 (2) for H9A and H9B, respectively and a H $\cdots$ H distance of 1.276 (4). The other H-atoms were included at calculated positions and treated as riding atoms: O—H = 0.82 Å, N—H = 0.91, 0.89 Å for NH and NH<sub>3</sub>, C—H = 0.93, 0.98, 0.97 and 0.96 Å for CH(aliphatic), CH(aromatic), CH<sub>2</sub> and CH<sub>3</sub> hydrogen atoms, respectively. These H-atoms were refined with  $U_{iso}(H) = k \times U_{eq}(\text{parent atom})$ , where  $k = 1.5$  for OH and CH<sub>3</sub> H-atoms, and  $k = 1.2$  for all other H-atoms.

## Figures

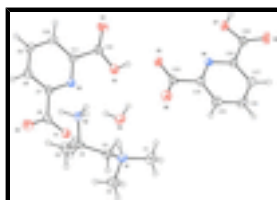


Fig. 1. The molecular structure of the title compound. Displacement ellipsoids are drawn at 30% probability level.

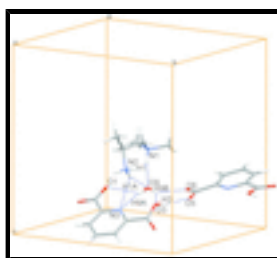


Fig. 2. The packing diagram of the title compound showing hydrogen bonding interactions in the asymmetric unit as blue dashed lines.

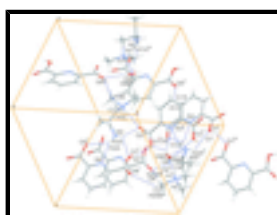


Fig. 3. The packing diagram of the title compound showing all hydrogen bonding interactions as blue dashed lines. Symmetry codes: (i)  $-x+1, y-1/2, -z+3/2$ ; (ii)  $-x+1, y+1/2, -z+3/2$ ; (iii)  $x, y+1, z$ ; (iv)  $-x+3/2, -y+1, z-1/2$ ; (v)  $-x+2, y-1/2, -z+3/2$ .

## *N*<sup>1</sup>,*N*<sup>1</sup>-Dimethylpropane-1,2-diaminium bis(6-carboxypyridine-2-carboxylate) monohydrate

### Crystal data

$C_5H_{16}N_2^{2+} \cdot 2C_7H_4NO_4^- \cdot H_2O$

$M_r = 454.44$

Orthorhombic,  $P2_12_12_1$

Hall symbol: P 2ac 2ab

$a = 11.826 (8) \text{ \AA}$

$b = 13.376 (8) \text{ \AA}$

$c = 13.479 (8) \text{ \AA}$

$V = 2132 (2) \text{ \AA}^3$

$Z = 4$

$F(000) = 960$

$D_x = 1.416 \text{ Mg m}^{-3}$

Mo  $K\alpha$  radiation,  $\lambda = 0.71073 \text{ \AA}$

Cell parameters from 296(2) reflections

$\theta = 2.2\text{--}27.0^\circ$

$\mu = 0.11 \text{ mm}^{-1}$

$T = 293 \text{ K}$

Irregular, colorless

$0.42 \times 0.38 \times 0.22 \text{ mm}$

### Data collection

Bruker APEXII CCD  
diffractometer

Radiation source: fine-focus sealed tube  
graphite

$\varphi$  and  $\omega$  scans

Absorption correction: multi-scan  
(*SADABS*; Bruker, 2008)

$T_{\min} = 0.708, T_{\max} = 0.746$

4650 independent reflections

4509 reflections with  $I > 2\sigma(I)$

$R_{\text{int}} = 0.025$

$\theta_{\max} = 27.0^\circ, \theta_{\min} = 2.2^\circ$

$h = -15 \rightarrow 15$

$k = -17 \rightarrow 17$

70173 measured reflections

$l = -17 \rightarrow 17$

### Refinement

Refinement on $F^2$	Secondary atom site location: difference Fourier map
Least-squares matrix: full	Hydrogen site location: inferred from neighbouring sites
$R[F^2 > 2\sigma(F^2)] = 0.029$	H atoms treated by a mixture of independent and constrained refinement
$wR(F^2) = 0.084$	$w = 1/[\sigma^2(F_o^2) + (0.0516P)^2 + 0.2616P]$
$S = 1.07$	where $P = (F_o^2 + 2F_c^2)/3$
4650 reflections	$(\Delta/\sigma)_{\max} = 0.001$
298 parameters	$\Delta\rho_{\max} = 0.23 \text{ e } \text{\AA}^{-3}$
3 restraints	$\Delta\rho_{\min} = -0.18 \text{ e } \text{\AA}^{-3}$
Primary atom site location: structure-invariant direct methods	Extinction correction: <i>SHELXL97</i> (Sheldrick, 2008), $F_c^* = kFc[1+0.001xFc^2\lambda^3/\sin(2\theta)]^{-1/4}$
	Extinction coefficient: 0.0064 (13)

### Special details

**Geometry.** All s.u.'s (except the s.u. in the dihedral angle between two l.s. planes) are estimated using the full covariance matrix. The cell s.u.'s are taken into account individually in the estimation of s.u.'s in distances, angles and torsion angles; correlations between s.u.'s in cell parameters are only used when they are defined by crystal symmetry. An approximate (isotropic) treatment of cell s.u.'s is used for estimating s.u.'s involving l.s. planes.

**Refinement.** Refinement of  $F^2$  against ALL reflections. The weighted  $R$ -factor  $wR$  and goodness of fit  $S$  are based on  $F^2$ , conventional  $R$ -factors  $R$  are based on  $F$ , with  $F$  set to zero for negative  $F^2$ . The threshold expression of  $F^2 > 2\sigma(F^2)$  is used only for calculating  $R$ -factors(gt) *etc.* and is not relevant to the choice of reflections for refinement.  $R$ -factors based on  $F^2$  are statistically about twice as large as those based on  $F$ , and  $R$ -factors based on ALL data will be even larger.

### Fractional atomic coordinates and isotropic or equivalent isotropic displacement parameters ( $\text{\AA}^2$ )

	$x$	$y$	$z$	$U_{\text{iso}}^*/U_{\text{eq}}$
C1	0.82378 (16)	0.49387 (15)	0.59189 (15)	0.0608 (4)
H10A	0.7917	0.5578	0.6078	0.091*
H10B	0.8457	0.4929	0.5233	0.091*
H10C	0.8890	0.4823	0.6328	0.091*
C2	0.78465 (16)	0.31373 (12)	0.58604 (14)	0.0589 (4)
H20A	0.7278	0.2639	0.5979	0.088*
H20B	0.8493	0.3005	0.6271	0.088*
H20C	0.8067	0.3119	0.5175	0.088*
C3	0.63379 (12)	0.43601 (10)	0.55191 (10)	0.0410 (3)
H3B	0.6481	0.4194	0.4830	0.049*
H3C	0.6194	0.5073	0.5552	0.049*
C4	0.52821 (12)	0.38176 (9)	0.58465 (9)	0.0352 (3)
H4	0.5460	0.3112	0.5963	0.042*
C5	0.44060 (16)	0.38990 (14)	0.50382 (12)	0.0557 (4)

## supplementary materials

---

H5A	0.3731	0.3555	0.5239	0.084*
H5B	0.4694	0.3603	0.4440	0.084*
H5C	0.4235	0.4591	0.4921	0.084*
C6	0.51400 (11)	0.21400 (9)	0.86340 (10)	0.0361 (3)
C7	0.44510 (11)	0.29707 (9)	0.91060 (9)	0.0323 (2)
C8	0.34944 (14)	0.27536 (10)	0.96579 (11)	0.0469 (3)
H8	0.3263	0.2095	0.9746	0.056*
C9	0.28930 (15)	0.35256 (12)	1.00737 (13)	0.0547 (4)
H9	0.2244	0.3398	1.0442	0.066*
C10	0.32657 (12)	0.44927 (11)	0.99364 (11)	0.0433 (3)
H10	0.2881	0.5029	1.0218	0.052*
C11	0.42230 (10)	0.46459 (9)	0.93714 (9)	0.0309 (2)
C12	0.46436 (11)	0.56979 (9)	0.91995 (9)	0.0347 (3)
C13	0.74414 (11)	0.71223 (9)	0.80029 (10)	0.0360 (3)
C14	0.81762 (10)	0.79792 (9)	0.76580 (10)	0.0327 (2)
C15	0.92660 (12)	0.77789 (11)	0.73243 (12)	0.0446 (3)
H15	0.9531	0.7125	0.7291	0.054*
C16	0.99431 (12)	0.85656 (12)	0.70449 (13)	0.0490 (4)
H16	1.0672	0.8452	0.6812	0.059*
C17	0.95259 (11)	0.95225 (11)	0.71152 (10)	0.0402 (3)
H17	0.9975	1.0069	0.6951	0.048*
C18	0.84204 (10)	0.96563 (9)	0.74366 (9)	0.0315 (2)
C19	0.79612 (10)	1.07016 (9)	0.75010 (9)	0.0330 (2)
N1	0.73847 (10)	0.41412 (9)	0.61018 (8)	0.0399 (3)
H1	0.7203	0.4150	0.6758	0.048*
N2	0.47949 (9)	0.42609 (8)	0.67685 (8)	0.0340 (2)
H1A	0.5298	0.4217	0.7258	0.051*
H2A	0.4171	0.3930	0.6936	0.051*
H3A	0.4626	0.4900	0.6661	0.051*
N3	0.48126 (8)	0.39046 (7)	0.89568 (7)	0.0291 (2)
N4	0.77430 (8)	0.89011 (7)	0.76994 (7)	0.0295 (2)
O1	0.59431 (8)	0.23905 (6)	0.80781 (8)	0.0420 (2)
O2	0.48705 (13)	0.12753 (7)	0.88430 (10)	0.0636 (4)
O3	0.54684 (9)	0.57393 (7)	0.85809 (8)	0.0454 (2)
H3	0.5668	0.6322	0.8511	0.068*
O4	0.42263 (12)	0.63994 (8)	0.96310 (10)	0.0592 (3)
O5	0.64280 (8)	0.73404 (6)	0.82184 (8)	0.0417 (2)
O6	0.78683 (10)	0.62868 (7)	0.80691 (11)	0.0570 (3)
O7	0.68767 (8)	1.07388 (7)	0.76530 (8)	0.0428 (2)
H7	0.6673	1.1324	0.7681	0.064*
O8	0.85621 (10)	1.14190 (8)	0.74214 (11)	0.0578 (3)
O9	0.72243 (10)	0.42389 (9)	0.81056 (8)	0.0489 (3)
H9A	0.6703 (19)	0.3950 (18)	0.835 (2)	0.099 (9)*
H9B	0.711 (3)	0.4830 (14)	0.827 (2)	0.115 (11)*

Atomic displacement parameters ( $\text{\AA}^2$ )

$U^{11}$

$U^{22}$

$U^{33}$

$U^{12}$

$U^{13}$

$U^{23}$

C1	0.0545 (9)	0.0633 (10)	0.0645 (10)	-0.0123 (8)	0.0124 (8)	-0.0003 (8)
C2	0.0586 (10)	0.0474 (9)	0.0706 (10)	0.0237 (8)	0.0006 (8)	-0.0045 (8)
C3	0.0424 (7)	0.0358 (6)	0.0446 (7)	0.0094 (6)	0.0129 (5)	0.0066 (6)
C4	0.0431 (7)	0.0256 (5)	0.0370 (6)	0.0036 (5)	0.0063 (5)	-0.0008 (5)
C5	0.0664 (10)	0.0583 (9)	0.0423 (7)	-0.0145 (8)	-0.0085 (7)	-0.0005 (7)
C6	0.0419 (6)	0.0232 (5)	0.0431 (6)	0.0004 (5)	0.0016 (5)	0.0027 (5)
C7	0.0382 (6)	0.0248 (5)	0.0340 (5)	-0.0014 (5)	0.0030 (5)	0.0020 (4)
C8	0.0547 (8)	0.0329 (7)	0.0529 (8)	-0.0130 (6)	0.0179 (7)	-0.0007 (6)
C9	0.0528 (9)	0.0525 (8)	0.0587 (9)	-0.0150 (7)	0.0298 (8)	-0.0087 (7)
C10	0.0406 (7)	0.0406 (7)	0.0489 (7)	0.0015 (5)	0.0156 (6)	-0.0094 (6)
C11	0.0322 (6)	0.0276 (5)	0.0327 (5)	0.0004 (5)	0.0011 (5)	-0.0007 (4)
C12	0.0375 (6)	0.0256 (5)	0.0411 (6)	0.0034 (5)	-0.0008 (5)	-0.0004 (5)
C13	0.0369 (6)	0.0256 (5)	0.0455 (7)	0.0014 (5)	-0.0014 (5)	-0.0007 (5)
C14	0.0296 (6)	0.0273 (5)	0.0412 (6)	0.0026 (4)	0.0001 (5)	0.0010 (5)
C15	0.0341 (6)	0.0351 (6)	0.0647 (9)	0.0091 (5)	0.0054 (6)	0.0012 (6)
C16	0.0283 (6)	0.0533 (8)	0.0654 (9)	0.0069 (6)	0.0112 (6)	0.0066 (7)
C17	0.0292 (6)	0.0420 (7)	0.0495 (7)	-0.0043 (5)	0.0044 (5)	0.0083 (6)
C18	0.0294 (5)	0.0295 (6)	0.0357 (6)	-0.0009 (4)	-0.0008 (5)	0.0046 (4)
C19	0.0317 (5)	0.0283 (5)	0.0391 (6)	-0.0024 (5)	0.0002 (5)	0.0053 (5)
N1	0.0420 (6)	0.0376 (6)	0.0400 (5)	0.0045 (5)	0.0107 (5)	-0.0022 (4)
N2	0.0305 (5)	0.0362 (5)	0.0353 (5)	-0.0017 (4)	0.0039 (4)	-0.0012 (4)
N3	0.0299 (5)	0.0238 (4)	0.0335 (5)	0.0005 (4)	0.0034 (4)	0.0018 (4)
N4	0.0267 (4)	0.0255 (4)	0.0363 (5)	0.0006 (4)	0.0008 (4)	0.0017 (4)
O1	0.0368 (4)	0.0260 (4)	0.0632 (6)	0.0017 (4)	0.0110 (4)	-0.0009 (4)
O2	0.0880 (9)	0.0216 (4)	0.0814 (8)	0.0001 (5)	0.0362 (7)	0.0061 (5)
O3	0.0495 (5)	0.0229 (4)	0.0637 (6)	-0.0027 (4)	0.0157 (5)	0.0024 (4)
O4	0.0746 (8)	0.0288 (5)	0.0742 (8)	0.0032 (5)	0.0236 (7)	-0.0083 (5)
O5	0.0334 (4)	0.0256 (4)	0.0660 (6)	-0.0011 (4)	0.0090 (4)	0.0041 (4)
O6	0.0486 (6)	0.0267 (5)	0.0956 (9)	0.0067 (4)	0.0086 (6)	0.0069 (5)
O7	0.0325 (4)	0.0244 (4)	0.0714 (6)	0.0015 (3)	0.0023 (4)	-0.0022 (4)
O8	0.0448 (6)	0.0313 (5)	0.0973 (9)	-0.0083 (4)	0.0141 (6)	0.0070 (5)
O9	0.0454 (6)	0.0497 (6)	0.0516 (6)	0.0039 (5)	0.0127 (5)	-0.0008 (5)

*Geometric parameters (Å, °)*

C1—N1	1.489 (2)	C10—H10	0.9300
C1—H10A	0.9600	C11—N3	1.3347 (15)
C1—H10B	0.9600	C11—C12	1.5104 (16)
C1—H10C	0.9600	C12—O4	1.2094 (16)
C2—N1	1.4857 (18)	C12—O3	1.2843 (16)
C2—H20A	0.9600	C13—O6	1.2296 (16)
C2—H20B	0.9600	C13—O5	1.2672 (16)
C2—H20C	0.9600	C13—C14	1.5117 (17)
C3—N1	1.4950 (19)	C14—N4	1.3364 (15)
C3—C4	1.5101 (18)	C14—C15	1.3910 (18)
C3—H3B	0.9700	C15—C16	1.375 (2)
C3—H3C	0.9700	C15—H15	0.9300
C4—N2	1.4926 (15)	C16—C17	1.375 (2)
C4—C5	1.507 (2)	C16—H16	0.9300



## supplementary materials

---

C4—H4	0.9800	C17—C18	1.3889 (17)
C5—H5A	0.9600	C17—H17	0.9300
C5—H5B	0.9600	C18—N4	1.3371 (15)
C5—H5C	0.9600	C18—C19	1.5025 (16)
C6—O2	1.2323 (16)	C19—O8	1.1988 (16)
C6—O1	1.2553 (16)	C19—O7	1.2996 (15)
C6—C7	1.5177 (17)	N1—H1	0.9100
C7—N3	1.3356 (15)	N2—H1A	0.8900
C7—C8	1.3848 (18)	N2—H2A	0.8900
C8—C9	1.373 (2)	N2—H3A	0.8900
C8—H8	0.9300	O3—H3	0.8200
C9—C10	1.379 (2)	O7—H7	0.8200
C9—H9	0.9300	O9—H9A	0.799 (17)
C10—C11	1.3798 (18)	O9—H9B	0.830 (17)
N1—C1—H10A	109.5	N3—C11—C10	123.33 (11)
N1—C1—H10B	109.5	N3—C11—C12	117.12 (10)
H10A—C1—H10B	109.5	C10—C11—C12	119.55 (11)
N1—C1—H10C	109.5	O4—C12—O3	126.07 (13)
H10A—C1—H10C	109.5	O4—C12—C11	120.98 (12)
H10B—C1—H10C	109.5	O3—C12—C11	112.94 (10)
N1—C2—H20A	109.5	O6—C13—O5	125.52 (13)
N1—C2—H20B	109.5	O6—C13—C14	118.39 (12)
H20A—C2—H20B	109.5	O5—C13—C14	116.08 (11)
N1—C2—H20C	109.5	N4—C14—C15	123.12 (12)
H20A—C2—H20C	109.5	N4—C14—C13	117.80 (11)
H20B—C2—H20C	109.5	C15—C14—C13	119.08 (11)
N1—C3—C4	115.91 (11)	C16—C15—C14	118.73 (13)
N1—C3—H3B	108.3	C16—C15—H15	120.6
C4—C3—H3B	108.3	C14—C15—H15	120.6
N1—C3—H3C	108.3	C15—C16—C17	118.99 (13)
C4—C3—H3C	108.3	C15—C16—H16	120.5
H3B—C3—H3C	107.4	C17—C16—H16	120.5
N2—C4—C5	107.93 (12)	C16—C17—C18	118.63 (12)
N2—C4—C3	111.82 (11)	C16—C17—H17	120.7
C5—C4—C3	108.80 (11)	C18—C17—H17	120.7
N2—C4—H4	109.4	N4—C18—C17	123.32 (12)
C5—C4—H4	109.4	N4—C18—C19	118.11 (10)
C3—C4—H4	109.4	C17—C18—C19	118.57 (11)
C4—C5—H5A	109.5	O8—C19—O7	124.64 (12)
C4—C5—H5B	109.5	O8—C19—C18	121.69 (11)
H5A—C5—H5B	109.5	O7—C19—C18	113.67 (10)
C4—C5—H5C	109.5	C2—N1—C1	111.23 (13)
H5A—C5—H5C	109.5	C2—N1—C3	111.49 (12)
H5B—C5—H5C	109.5	C1—N1—C3	109.50 (12)
O2—C6—O1	125.64 (13)	C2—N1—H1	108.2
O2—C6—C7	116.91 (12)	C1—N1—H1	108.2
O1—C6—C7	117.45 (10)	C3—N1—H1	108.2
N3—C7—C8	122.59 (12)	C4—N2—H1A	109.5
N3—C7—C6	116.73 (11)	C4—N2—H2A	109.5

C8—C7—C6	120.68 (11)	H1A—N2—H2A	109.5
C9—C8—C7	118.99 (12)	C4—N2—H3A	109.5
C9—C8—H8	120.5	H1A—N2—H3A	109.5
C7—C8—H8	120.5	H2A—N2—H3A	109.5
C8—C9—C10	119.01 (13)	C11—N3—C7	117.68 (10)
C8—C9—H9	120.5	C14—N4—C18	117.15 (10)
C10—C9—H9	120.5	C12—O3—H3	109.5
C9—C10—C11	118.40 (12)	C19—O7—H7	109.5
C9—C10—H10	120.8	H9A—O9—H9B	103 (3)
C11—C10—H10	120.8		
N1—C3—C4—N2	75.97 (14)	N4—C14—C15—C16	1.6 (2)
N1—C3—C4—C5	-164.91 (12)	C13—C14—C15—C16	-177.73 (14)
O2—C6—C7—N3	173.61 (14)	C14—C15—C16—C17	0.7 (2)
O1—C6—C7—N3	-5.34 (18)	C15—C16—C17—C18	-2.0 (2)
O2—C6—C7—C8	-6.7 (2)	C16—C17—C18—N4	1.2 (2)
O1—C6—C7—C8	174.39 (14)	C16—C17—C18—C19	-179.26 (13)
N3—C7—C8—C9	-0.3 (2)	N4—C18—C19—O8	168.74 (14)
C6—C7—C8—C9	179.99 (14)	C17—C18—C19—O8	-10.81 (19)
C7—C8—C9—C10	-0.6 (3)	N4—C18—C19—O7	-10.92 (16)
C8—C9—C10—C11	1.0 (3)	C17—C18—C19—O7	169.53 (12)
C9—C10—C11—N3	-0.5 (2)	C4—C3—N1—C2	74.31 (15)
C9—C10—C11—C12	179.35 (14)	C4—C3—N1—C1	-162.17 (12)
N3—C11—C12—O4	-172.38 (13)	C10—C11—N3—C7	-0.30 (18)
C10—C11—C12—O4	7.7 (2)	C12—C11—N3—C7	179.80 (11)
N3—C11—C12—O3	6.62 (16)	C8—C7—N3—C11	0.73 (19)
C10—C11—C12—O3	-173.29 (12)	C6—C7—N3—C11	-179.55 (11)
O6—C13—C14—N4	-172.34 (13)	C15—C14—N4—C18	-2.43 (19)
O5—C13—C14—N4	6.38 (18)	C13—C14—N4—C18	176.91 (11)
O6—C13—C14—C15	7.0 (2)	C17—C18—N4—C14	1.00 (18)
O5—C13—C14—C15	-174.25 (13)	C19—C18—N4—C14	-178.52 (11)

Hydrogen-bond geometry (Å, °)

<i>D</i> —H... <i>A</i>	<i>D</i> —H	H... <i>A</i>	<i>D</i> ... <i>A</i>	<i>D</i> —H... <i>A</i>
N1—H1...O9	0.91	1.82	2.711 (2)	165
N2—H1A...O9	0.89	2.55	3.392 (3)	158
N2—H1A...N3	0.89	2.40	2.988 (2)	124
N2—H2A...O5 <sup>i</sup>	0.89	2.25	2.948 (2)	135
N2—H2A...N4 <sup>i</sup>	0.89	2.32	3.123 (3)	151
O3—H3...O5	0.82	1.68	2.473 (2)	162
N2—H3A...O2 <sup>ii</sup>	0.89	2.05	2.845 (2)	148
N2—H3A...O7 <sup>i</sup>	0.89	2.30	2.902 (2)	125
O7—H7...O1 <sup>iii</sup>	0.82	1.75	2.535 (2)	159
O9—H9A...O1	0.80 (2)	2.30 (2)	2.900 (2)	132 (2)
O9—H9A...N3	0.80 (2)	2.38 (2)	3.107 (3)	152 (2)
O9—H9B...O3	0.83 (2)	2.33 (3)	2.958 (3)	133 (3)
O9—H9B...O6	0.83 (2)	2.16 (2)	2.844 (2)	139 (3)
C3—H3B...O6 <sup>iv</sup>	0.97	2.58	3.541 (3)	172.

## supplementary materials

---

C3—H3C $\cdots$ O2 <sup>ii</sup>	0.97	2.20	3.057 (3)	147.
C4—H4 $\cdots$ O4 <sup>i</sup>	0.98	2.45	3.349 (3)	152.
C15—H15 $\cdots$ O8 <sup>v</sup>	0.93	2.48	3.166 (3)	131.
C2—H20A $\cdots$ O4 <sup>i</sup>	0.96	2.57	3.443 (3)	152.

Symmetry codes: (i)  $-x+1, y-1/2, -z+3/2$ ; (ii)  $-x+1, y+1/2, -z+3/2$ ; (iii)  $x, y+1, z$ ; (iv)  $-x+3/2, -y+1, z-1/2$ ; (v)  $-x+2, y-1/2, -z+3/2$ .

Fig. 1

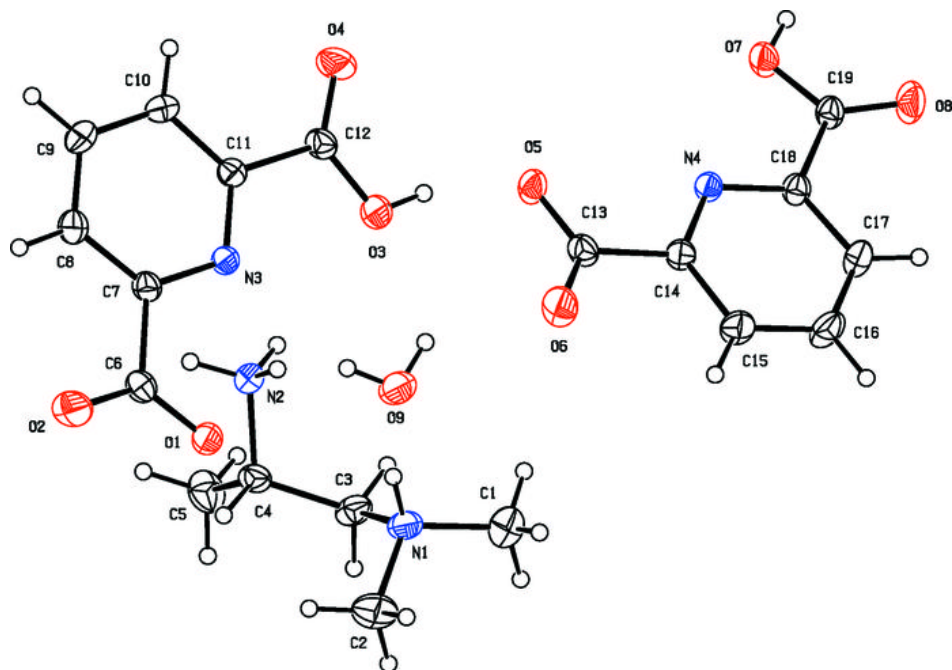


Fig. 2

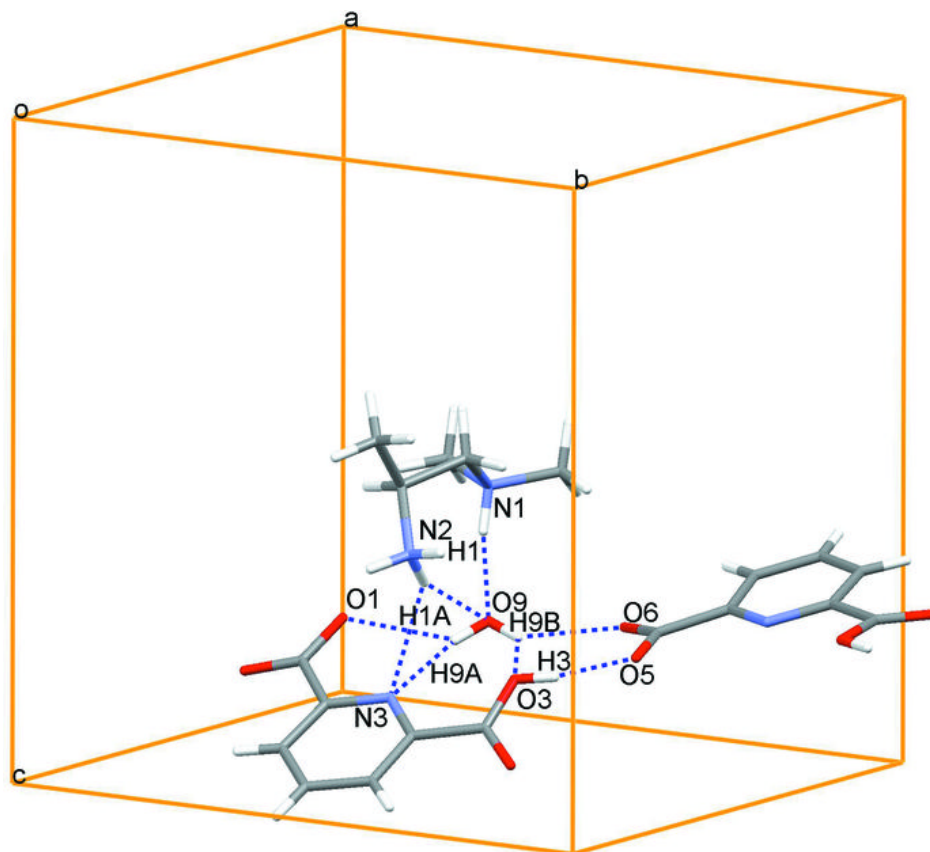


Fig. 3

